



Botanical Survey of India

Ministry of Environment, Forest and Climate Change
Government of India

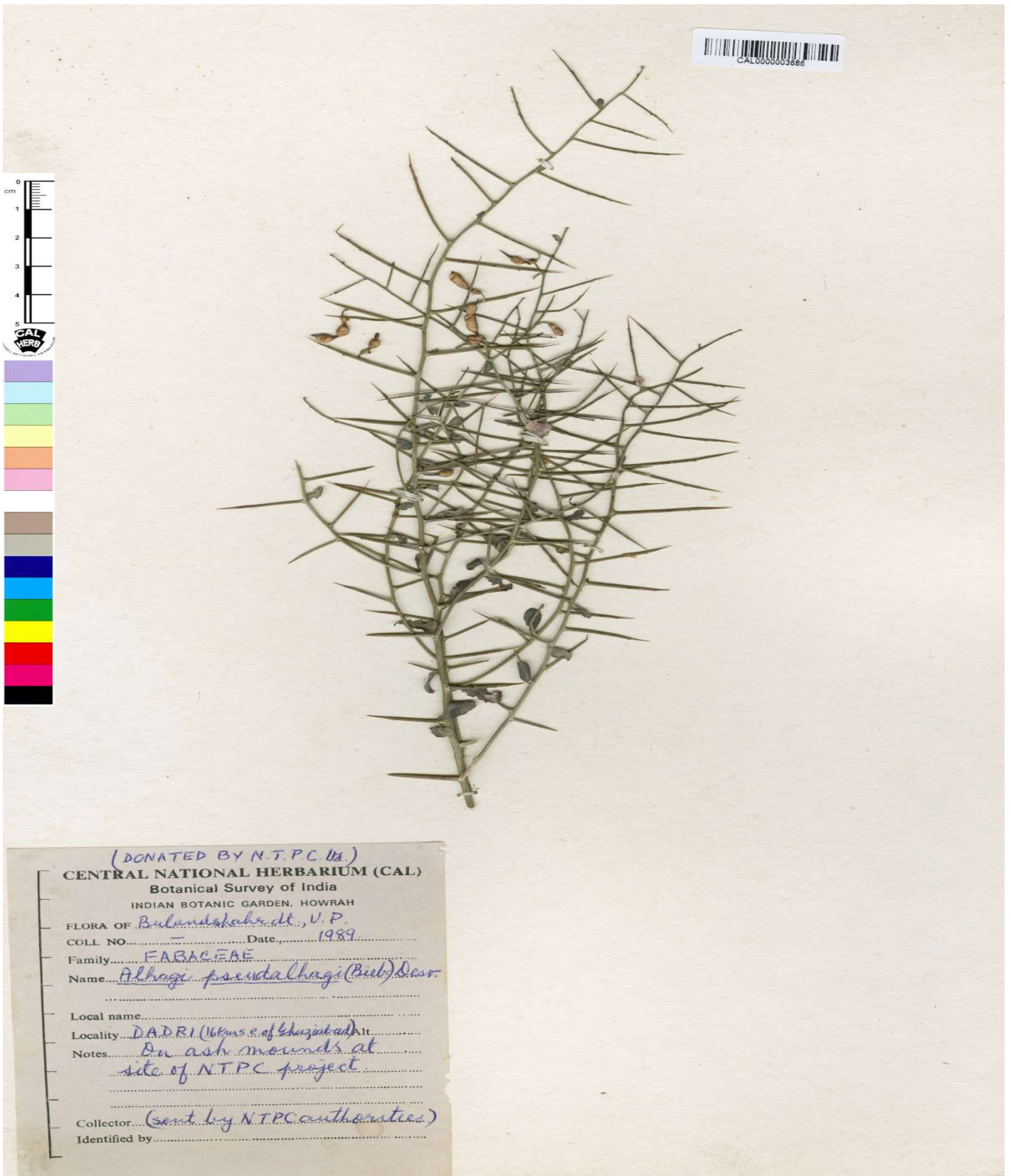


Image Details of Economy Botany Herbarium

Barcode: CAL0000003686

Family: [FABACEAE](#)

Scientific Name: [Alhagi pseudoalhagi \(Bieb.\) Desv.](#)

Collector: [NTPC Authorities](#)

Country: [India](#)

Uses: [The plant contains laxative, diuretic, antibilious, and antiseptic properties. The twigs of the plant and also the flowers used for fumigation in piles. For cough decoction of twigs is used. For swellings and abscesses decoction of roots are used. Twigs contain alkaloids which showed sympathomimetic activity. A sweet, sugary excretion, Alhagi manna, obtained from the plant is called Taranjabin and used as an expectorant, anti-emetic, and laxative.](#)