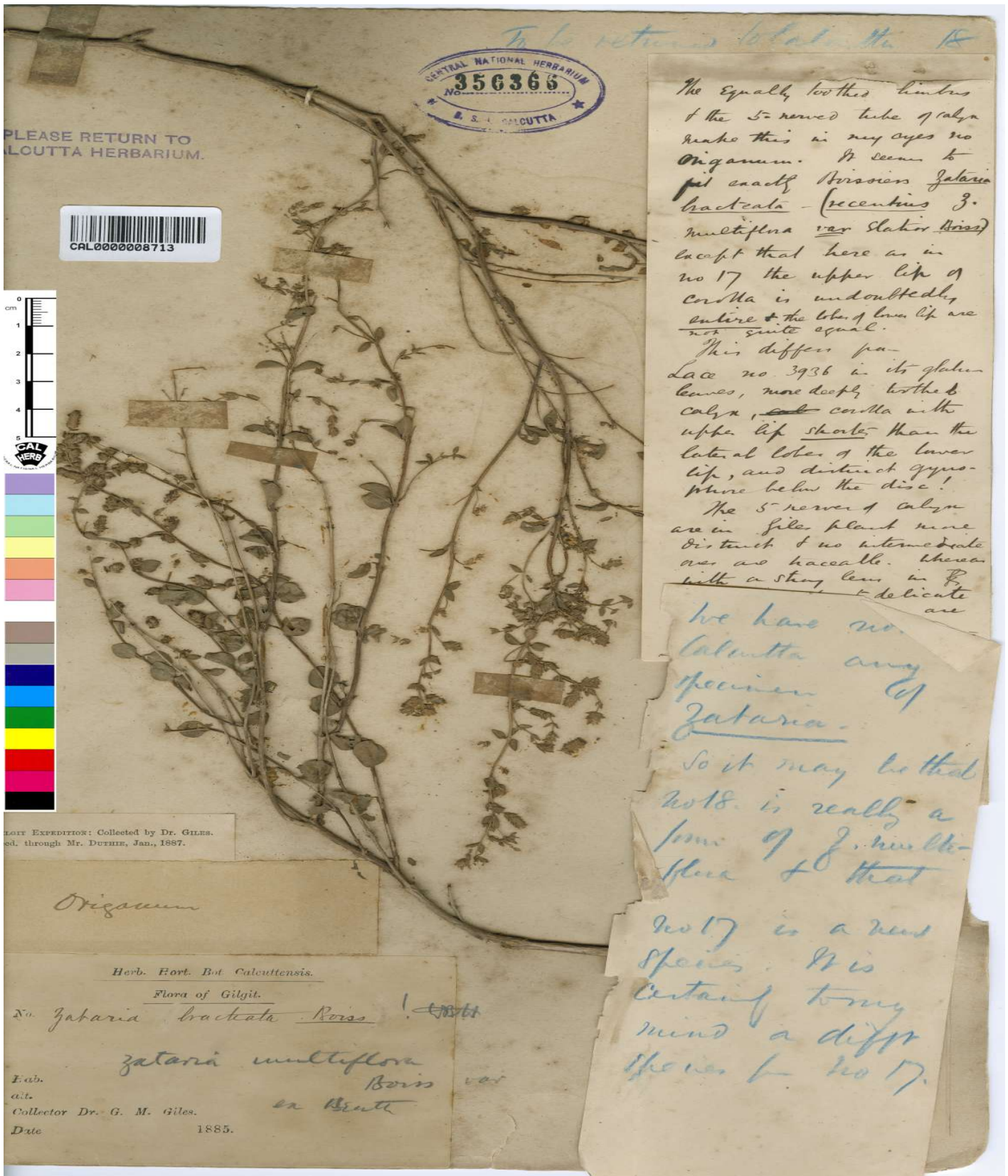




# Botanical Survey of India

Ministry of Environment, Forest and Climate Change  
Government of India



HERB. EXPEDITION: Collected by Dr. GILES.  
Ed. through Mr. DUTHIE, Jan., 1887.

*Origaneum*

Herb. Hort. Bot. Calcuttensis.

Flora of Gilgit.

No. *Zataria brachata* Boiss. ! ~~not~~

*zataria multiflora*  
Boiss var  
ex Benth

Lab.

alt.

Collector Dr. G. M. Giles.

Date

1885.

The Equally toothed limbus  
of the 5-nerved tube of calyx  
make this in my eyes no  
*Origaneum*. It seems to  
fit exactly Boissier's *Zataria*  
*brachata* (recently 3.  
*multiflora* var *slatior* Boiss)  
except that here as in  
no 17 the upper lip of  
corolla is undoubtedly  
entire & the lobes of lower lip are  
not quite equal.

This differs from  
Lace no 3936 in its glabrous  
leaves, more deeply toothed  
calyx, ~~and~~ corolla with  
upper lip shorter than the  
lateral lobes of the lower  
lip, and distinct gynophore  
below the disc!

The 5-nerved calyx  
are in Gilgit plant more  
distinct & no intermediate  
ones are traceable. Whereas  
with a strong line in *Z.*  
with a strong line in *Z.*  
with a strong line in *Z.*  
with a strong line in *Z.*

We have no  
*Calcutta* any  
specimen of  
*Zataria*.

So it may be that  
no 18 is really a  
form of *Z. multiflora*  
+ that

no 17 is a new  
species. It is  
certainly to my  
mind a different  
species from no 17.

Image Details of Economy Botany Herbarium

Barcode: CAL0000008713

---

Family: [LAMIACEAE](#)

Scientific Name: [Zataria multiflora Boiss.](#)

Uses: [The constituent of the drug- Saatar is obtained from the leaves and stems are imported for medicinal use. The drug infusion is having diaphoretic, diuretic, stimulant, and stomachic properties and it is also given to subside premature labour pains.](#)